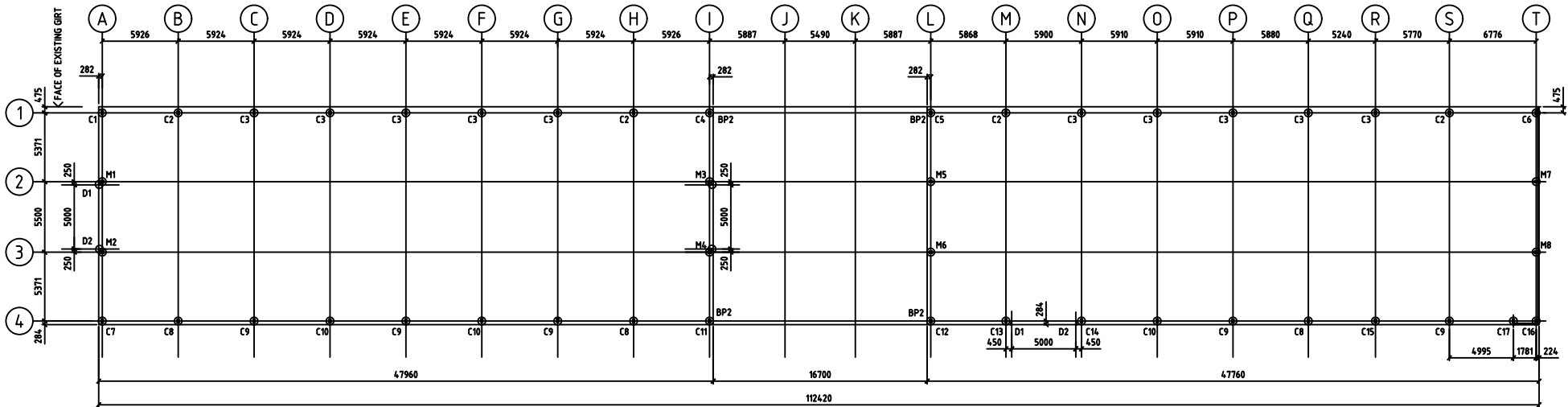
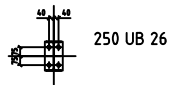


AUSTRALIA HOLDING DOWN PLAN



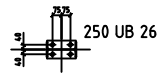
HOLDING DOWN BOLT LAYOUT - BUILDING 2

FOOTING SCHEDULE:			
MARK	DESCRIPTION	SIZE	COMMENTS
BP1	BORED PIER	600φ x 1800 DEEP APPROX.	MASS CONCRETE
BP2	BORED PIER	600φ x 2200 DEEP APPROX.	MASS CONCRETE



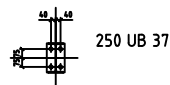
DETAIL 1

FOR COLUMNS C7 TO C9 & C12 TO C16 (TOTAL 16 SETS)
 4 - M20 4.6/S HD BOLTS x 725 LONG.
 500 EMBEDMENT INTO FOOTING
 75 PROJECTION ABOVE TOP OF 150 SLAB, NO GROUT



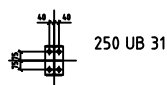
DETAIL 4

FOR COLUMNS M1 TO M8 (TOTAL 8 SETS)
 4 - M20 4.6/S HD BOLTS x 725 LONG.
 500 EMBEDMENT INTO FOOTING
 75 PROJECTION ABOVE TOP OF 150 SLAB, NO GROUT



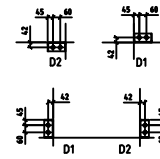
DETAIL 2

FOR COLUMNS C4, C5, C10, C11 (TOTAL 4 SETS)
 4 - M20 4.6/S HD BOLTS x 725 LONG.
 500 EMBEDMENT INTO FOOTING
 75 PROJECTION ABOVE TOP OF 150 SLAB, NO GROUT



DETAIL 3

FOR COLUMNS C1 TO C3 & C6 (TOTAL 16 SETS)
 4 - M20 4.6/S HD BOLTS x 725 LONG.
 500 EMBEDMENT INTO FOOTING
 75 PROJECTION ABOVE TOP OF 150 SLAB, NO GROUT



150 x 75 x 5.0CC

DETAIL 5

FOR COLUMNS D1 TO D2 (TOTAL 6 SETS)
 2 - M20 4.6/S HD BOLTS x 725 LONG.
 500 EMBEDMENT INTO FOOTING
 75 PROJECTION ABOVE TOP OF 150 SLAB, NO GROUT

NOTE:

REFER TO ENGINEERS DWG. 1297-S04 FOR FOOTING DETAILS
 ALL BORED PIERS TO BE BP1 UNO

DID APPROX. 12 BUILDING FOR
 CadSystems Australia BEFORE
 MY CONTACT PASSED AWAY

		PLEASE READ GENERAL NOTES BELOW PRIOR TO COMMENCEMENT.				PROPOSED BUILDING EXTENSION AT RACECOURSE ROAD, RUTHERFORD		DATE:	
		1. HOLES 22 DIA FOR 120MM DIA S BOLTS U.N.O.						SCALE: 1:150	
		2. MINIMUM EDGE DISTANCE - 35mm U.N.O.						DSN: BV	
		3. ALL STRUCTURAL STEEL SHALL BE IN ACCORDANCE WITH AS 1554 PART 1 & PART 2 (WELD CATEGORY SP U.N.O.)						CHK: DJB	
A		ISSUED FOR APPROVAL				HOLDING DOWN BOLT LAYOUT - BLDG 2		DWG: 0315-M01	
REV.		AMENDMENT DESCRIPTION		DATE				REV. A	